



Roller Gates

For Large Openings and High Head Applications



Roller Gates

For Large Openings and High Head Applications

The Rodney Hunt Roller Gate is designed to control flow and reduce operating loads for large openings, high head applications, or where frequent operation is required. Permanently lubricated stainless steel wheels are mounted on each side of the gate and operate on rails, which are mounted on each side of the opening.



This 30' x 28.5' fabricated steel roller gate was installed at Idaho Power's Swan Falls Hydroelectric facility.

Rugged and Corrosion Resistant

Steel or Stainless Steel construction and self-lubricating composite bearings ensure long service life.

Wheels Reduce Operating Thrust

The Roller Gate is designed to reduce operating thrust with stainless steel wheels that operate on rails. The wheels are sized accordingly and spaced along the side of the gate to support equal portions of the hydrostatic load.

Long-Term Tight Sealing

Resilient seals are attached across the top of the gate and on both vertical sides, with a seal along the invert for flush-bottom closure. The resilient seals are attached with stainless steel strips and retaining bolts for long-term tight sealing.

Emergency Closure Option

Where self-closing is required, the Roller Gate can be designed with gravity closure as an option. This protects the downstream system in an emergency.

One Source for Actuation

Rodney Hunt is your complete source for design, manufacturing, testing, and start up. We will assist you in selecting the right actuation system for your application needs.

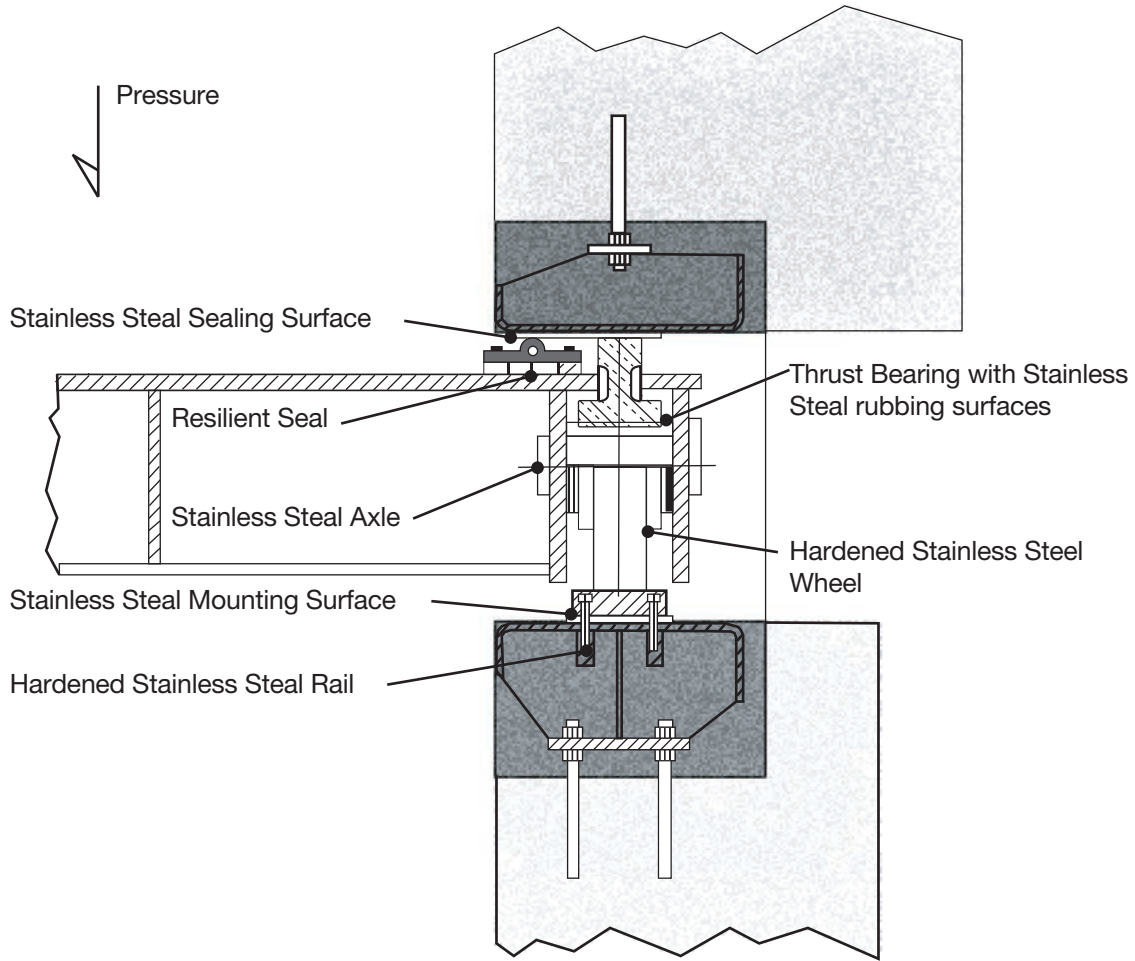
Field Service Inspection

Our experienced Aftermarket Services team can provide field service inspection to ensure that your crest gate is installed and operating effectively. We also provide training and start-up support.

Certified to ISO 9001:2008

Components

This illustration shows the typical arrangement of the Roller Gate wheels, rails, and seals.



Materials

Gate Disc:	Skin Plate Steel or Stainless Steel
Gate Disc Frame Members:	Structural Steel or Stainless Steel
Retainer Bars and Fasteners:	Stainless Steel
Contact Surfaces for Seals:	Stainless Steel
Roller Assembly -	
Wheels:	Stainless Steel, Type 17-4PH
Bearing:	Composite, Permanently Lubricated Sleeve Type
Axle:	Stainless Steel, Type 316
Rails:	Hardened Stainless Steel
Stems, Couplings:	Stainless Steel, Type 316
Stem Guides:	Stainless Steel, Type 316, Bronze Guides



**RODNEY
HUNT**

®

Engineered Flow Control Products

Gates

- Sluice Gates
- Bonneted Gates
- Channel Gates
- Weir Gates
- Crest Gates (including Bascule® and Pelican® designs)
- Tainter Gates
- Slide Gates
- Roller Gates
- Hinged Crest Gates
- Bulkhead Gates
- Velocity Control Gates
- Stop Logs
- Flap Gates

Actuation

Manual, electric, and hydraulic actuation systems are available.

For more information about Rodney Hunt products or to contact a sales representative, visit the Rodney Hunt website (www.rodneyhunt.com) or call 978-633-4362